

CORDLESS SWIMMING POOL VACUUM CLEANER

INSTRUCTIONS FOR USE



EV105

Contents

SAFETY WARNINGS AND INSTRUCTIONS	P.7
PREPARATION FOR USE	P.10
Charging the battery	P.10
Settings before use	P.11
Installing the side extension	P.11
Removing the side extension	P.12
Pool preparation	P.12
OPERATION	P.12
Vacuuming the recess for automatic slatted cover	P.14
CLEANING THE FILTER BAG/CARTRIDGE	P.14
FILTER	P.14
MAINTENANCE AND STORAGE	P.15
Replacing the front wheels	P.15
BATTERY DISPOSAL	P.16
Battery removal procedure	P.17
TROUBLESHOOTING	P.18

Note: Photos/drawings of the product and its components are for illustrative purposes only. The product and its components shown/depicted in the images may vary depending on the product purchased.
model.

Accessories/components shown in this manual and in the component diagrams

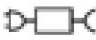
they may not necessarily be used on every model.

SAFETY WARNINGS AND INSTRUCTIONS

The information provided in this User Manual will help you operate this product safely, protect yourself and others from hazards, and prevent damage to the equipment and other property.

SAVE THESE INSTRUCTIONS

ATTENTION!

- This is not a TOY. Keep the pool vacuum and its accessories out of reach of children.
- Never let children use this product.
- This appliance is not intended for use by persons with reduced physical, sensory or mental capabilities, or lack of experience and knowledge, unless they have been given supervision or instruction concerning use of the appliance by a person responsible for their safety and understand the hazards involved.
- Children must not play with this device.
- Cleaning and user maintenance shall not be performed by children.
- Before operating the pool cleaner, make sure it is completely submerged in water. The minimum water level required to operate the pool cleaner must cover the entire cleaner. Operating the pool cleaner that is not properly submerged in water could result in damage to the equipment and void the warranty.
- Maximum operating depth is 3 meters (9.8 ft.).
- Operating water temperature: 5°C (41°F) – 35°C (95°F).
-  Detachable power supply (external adapter).
- Only an external power source must be used to charge the pool vacuum cleaner and the charging plug supplied with the product.
- To charge the battery, use only the detachable power supply (external adapter model number: DSS12D-1351000-B / DSS12D-1351000-C / DSS12D-1351000-D/ LX135100U) that is supplied with this pool vacuum cleaner.
- Connect the external adapter to the power source through a residual current device (RCD) / ground fault circuit interrupter (GFCI). If in doubt, contact a qualified professional electrician.
- DO NOT use the pool vacuum cleaner if you notice any defects.
- Replace damaged parts only with parts that are approved by the supplier or manufacturer.
- Turn off the power, disconnect the external power source from the mains and first unplug the plug from the external power source and then from the pool vacuum cleaner.
- Before starting regular maintenance, such as cleaning the filter bag, unplug the pool vacuum cleaner from the mains and make sure that the vacuum cleaner is switched off.
- DO NOT attempt to replace the built-in rechargeable Li-Ion battery.
DO NOT touch the pool cleaner, external power supply, and charging plug with wet hands or without shoes when charging.

- This pool vacuum should not be used when there are people in the water or animals.
- DO NOT use this pool vacuum without a filter bag installed as this will void the warranty.
- Suction hazard: This pool vacuum creates a vacuum. Do not touch the suction opening with hair, body parts or loose clothing while the vacuum is in operation.
- Never insert body parts, clothing or other objects into openings and moving parts of the pool vacuum.
- Do not use the vacuum cleaner to vacuum toxic substances, flammable and combustible liquids (e.g. petrol) in the presence of explosive or flammable vapours.
- Under no circumstances should you attempt to disassemble the pool vacuum cleaner yourself and replace the impeller, electric motor and battery.
- Never touch the impeller with your fingers or other objects.
- The built-in battery must be removed before disposal.
qualified technician.
- This pool vacuum cleaner contains a battery that should only be removed by qualified personnel.
- Before removing the battery, the pool vacuum cleaner must be disconnected from the power supply.
- For details regarding battery recycling/disposal, please refer to the "BATTERY DISPOSAL" section of this manual and contact your local authorities for further information.
- The battery must be disposed of safely in accordance with local regulations.
and regulations.
- External power supply and charging plug:
 - Never use the external power source and charging plug for anything other than charging the battery of the pool vacuum cleaner in which it was supplied.
 - Do not use the external power supply and charging plug outdoors and do not expose them to rain, moisture, liquids or heat.
 - The transformer (or external source) must be located outside zone 1.
 - Keep the external power supply and charging plug out of the reach of children.
 - Do not use the external power source and charging plug if you find them damaged.
damage.
 - Do not touch the external power source and charging plug with wet hands.
 - When you are not using the charging source, unplug it from the outlet.
 - Never attempt to disassemble the external power supply and charging plug.

- If the power cord of the external power supply is damaged, the external power supply must be replaced by the manufacturer or its service personnel.
- The pool vacuum cleaner and charging plug must be completely dry before charging.

NOTICE!

- This pool vacuum is intended for underwater use only; it is not a general purpose vacuum. DO NOT use it for any purpose other than cleaning your pool.
- Use only the original accessories supplied with this product.
- DO NOT use the pool vacuum immediately after shock disinfecting the pool. It is recommended to let the pool water circulate for at least 24 hours.
48 hours.
- If you intend to use the pool vacuum in a saltwater pool, make sure that all the salt has dissolved before immersing it in the water.
- DO NOT use this vacuum cleaner in the same pool at the same time as another automatic cleaning device.
- Do not use this product to vacuum hard and sharp objects, as this could
The vacuum cleaner and its filter may be damaged.
- To prevent damage to the external power source and charging plug, do not carry the pool cleaner by the external power source cable or disconnect the cable from the power source and charging plug by pulling on the cable.
- Charge the pool cleaner indoors in a clean, dry and well-ventilated area.
ventilated place away from sunlight.
- DO NOT leave the pool cleaner charging for more than 10 hours.
- If you are not going to use the pool cleaner for a long time, unplug it from the charging plug, clean the cleaner and its accessories with a damp cloth and dry with a dry cloth. Before storing, check that the battery charge level is between 30% and 50%. Store the cleaner in a well-ventilated area away from sunlight, heat, sources of ignition, pool chemicals and children.
Recharge it every three months.
- All activities related to the disassembly of the main unit (i.e., dismantling batteries) must be carried out exclusively by an authorized technician.

The above warnings and cautions do not cover all risks and/or hazards of injury. Pool/spa owners should always exercise caution and common sense when using this product.

PREPARATION FOR USE

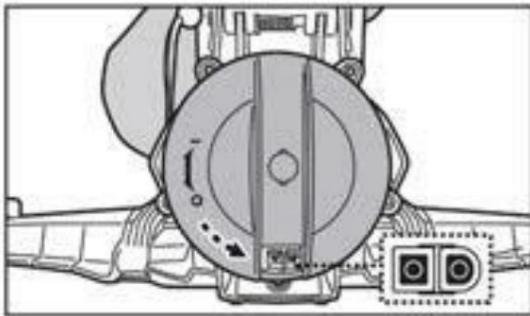
Charging the battery

IMPORTANT NOTE: Fully charge the pool vacuum cleaner before first use (approximately 6 hours).

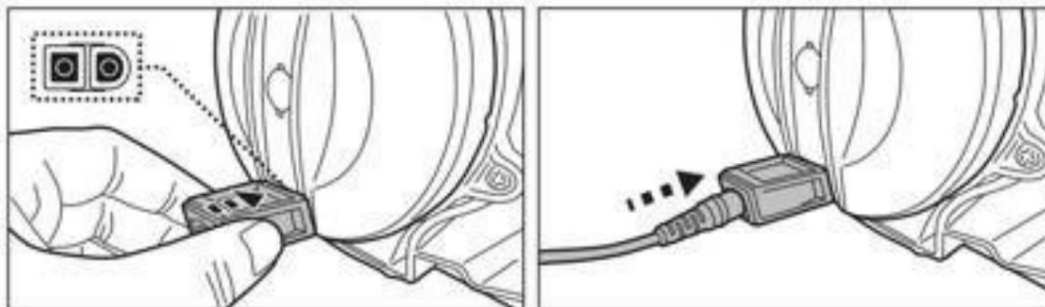
NOTICE!

- ÿ Use only the original external power supply and charging plug supplied.
- ÿ Before preparing for operation and charging, the pool vacuum cleaner and charging plug must be completely dry. (TIPS: use a cotton swab to dry the charging port and charging pins)
- ÿ The charging pins are waterproof. Residual water in the charging port and around the pins could lead to natural staining (a byproduct of the chemical reaction between water and electricity). However, these stains can be removed by gently scrubbing with a cotton pad dampened with lemon juice or vinegar.

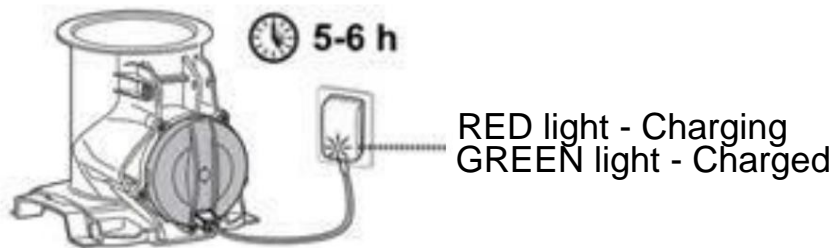
1. Place the device on a flat surface. Set the vacuum cleaner to off/charging mode by turning the selector counterclockwise until it clicks and the charging port is fully exposed.



2. Connect the charging plug to the charging port. **WARNING!** Do not reverse the polarity of the charging plug and make sure the charging plug and charging port are clean and dry before charging. TIPS: Use a cotton swab to dry the charging port and charging pins. Plug the charging cable of the external power source into the charging plug.



3. Connect the external power supply to the power source. The indicator light on the external power supply will turn red when charging and turn green when charging is complete. Charge for 5-6 hours.



- Immediately disconnect the external power source from the mains if you notice any of the following:

- Unpleasant or unusual odor
- Excessive heating
- Deformations, cracks, leaks
- Smoke

4. After charging is complete, unplug the external power source from the electrical outlet and disconnect the charging cable from the charging plug. Disconnect the charging plug from the device body. **WARNING!** Always disconnect the charging plug before immersing the vacuum cleaner in water.

The operating time of the vacuum cleaner when fully charged is normally up to 75 minutes. Note: Empty the filter bag regularly. Excessive dirt increases the load on the motor and can shorten the operating time.

NOTE: The rechargeable Li-Ion battery is classified as a consumable part. Its lifespan is limited and its ability to hold an electrical charge gradually decreases. As a result, the operating time of the pool cleaner will gradually decrease over its lifespan as it is charged and discharged repeatedly.

When the battery reaches the end of its useful life, ensure that it is disposed of according to the instructions in the "BATTERY DISPOSAL" section.

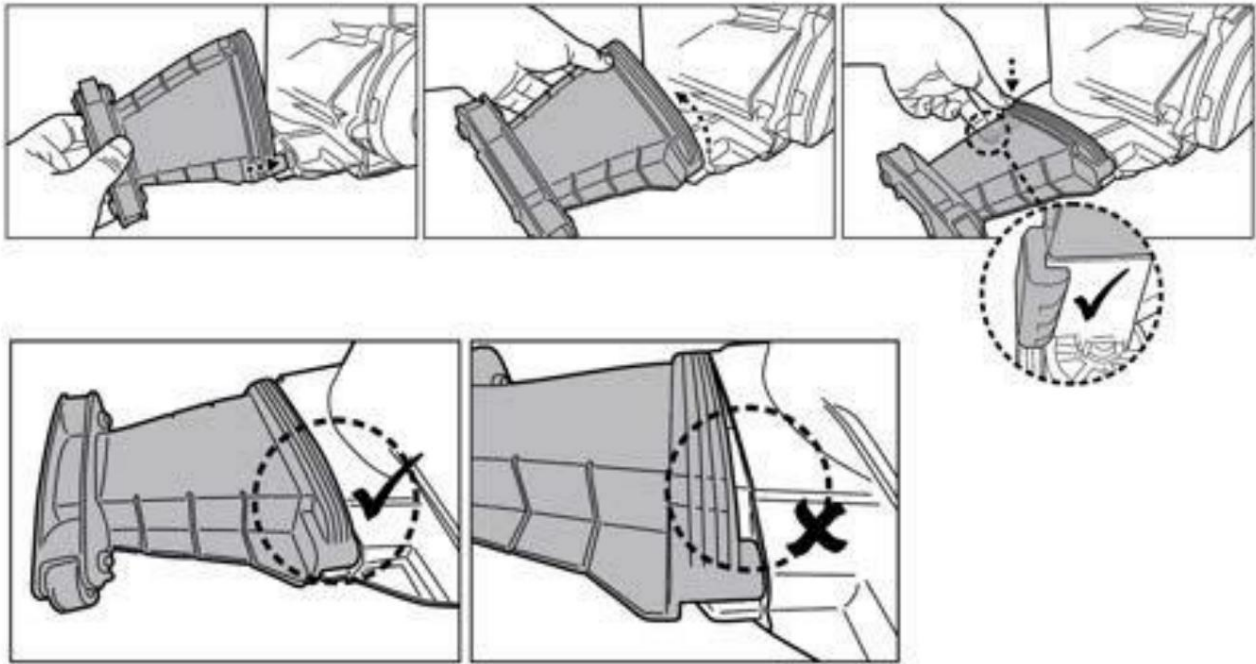
NOTE: Leave the pool cleaner idle for 30 to 40 minutes before recharging.

Settings before use

This pool vacuum cleaner is equipped with detachable attachments that can be removed to clean narrow spaces.

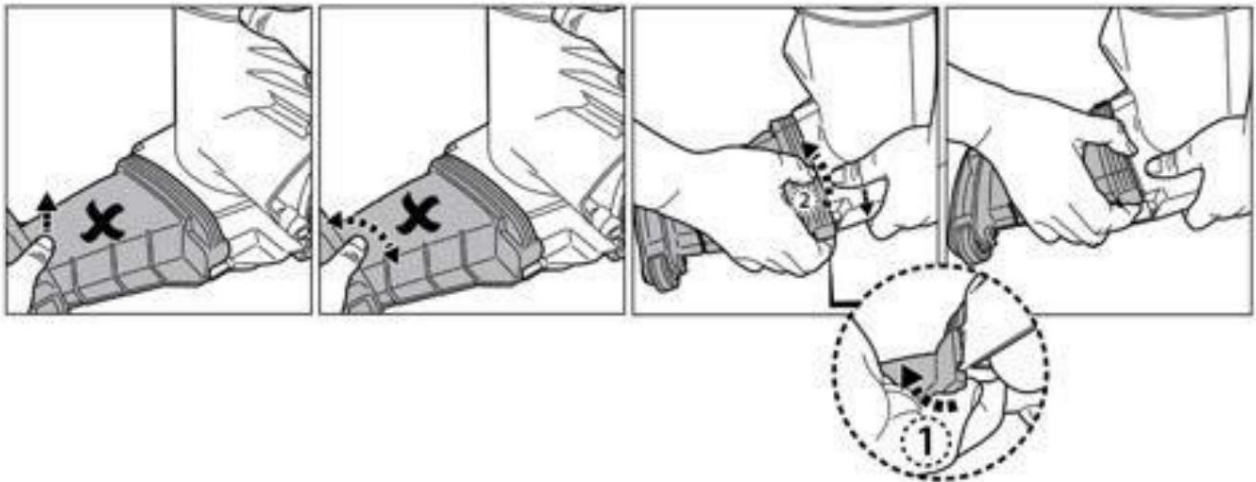
Installing the side extension

Insert the wing stem into the hole on the side of the vacuum cleaner body. Turn the wing and press to secure it to the vacuum cleaner body. You will hear a click when it is secured.



Removing the side extension

To remove the attachment from the vacuum cleaner body, proceed in reverse order.



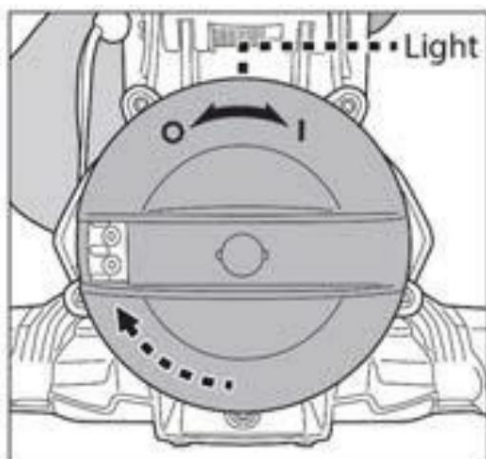
Pool preparation

- If the pool liner is brittle, damaged or wrinkled, contact a qualified professional to make the necessary repairs or replace the liner before you can use the pool vacuum.
- If you have a saltwater pool, make sure all the salt has dissolved before immersing the vacuum cleaner in the pool.

OPERATION

- 1) Bring the pool vacuum cleaner to the edge of the pool. Turn the switch in the direction clockwise until a click is heard and the water sensors are exposed. The indicator light on the top will turn blue.

Immerse the pool vacuum cleaner in water, the indicator light will immediately turn green and the impeller will start rotating in 4-5 seconds.

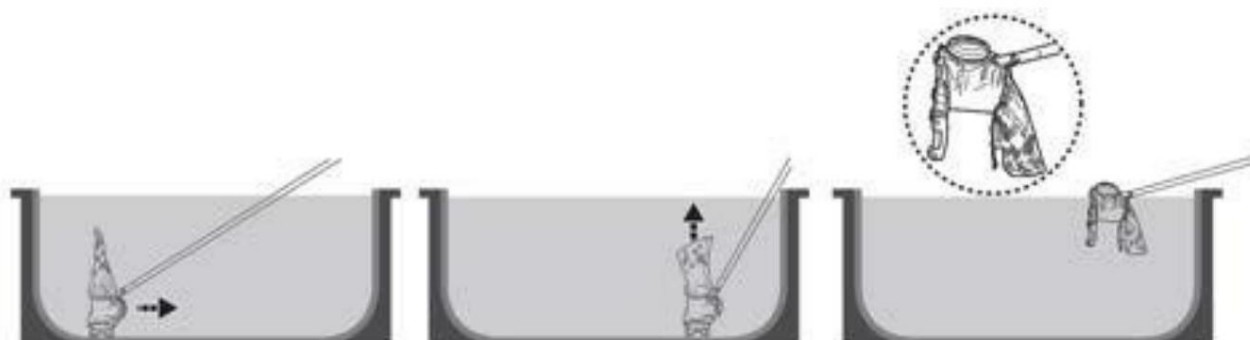


Indicator light color	
Blue	Power on (ready for operation)
Blue - flashing	The battery is almost empty.
Green	Operation
Green - flashing	The battery is almost empty.
The green light is off.	The battery is completely discharged. (recharge is required)
Red	Impeller stalled (impeller clogged).

To effectively vacuum up debris, place the pool vacuum flat on the bottom and move it back and forth over the dirty areas in a regular motion. Debris is collected from the front, sides and back and is trapped in the filter bag.

Excessive dirt and debris in the pool can clog the impeller, which will automatically stop to protect the motor and the indicator light will turn red. Remove the cleaner from the pool and turn it off, then clean the cleaner and empty the filter bag if it is full. To resume operation, turn the switch counterclockwise to the OFF position, then turn it clockwise to the ON position.

- 2) When removing the cleaner from the pool, first move it to the edge of the pool, turn it upside down, and then pick it up. This will prevent debris from leaking back into the pool (especially if using a fine filter bag) and the pole from bending when picked up.



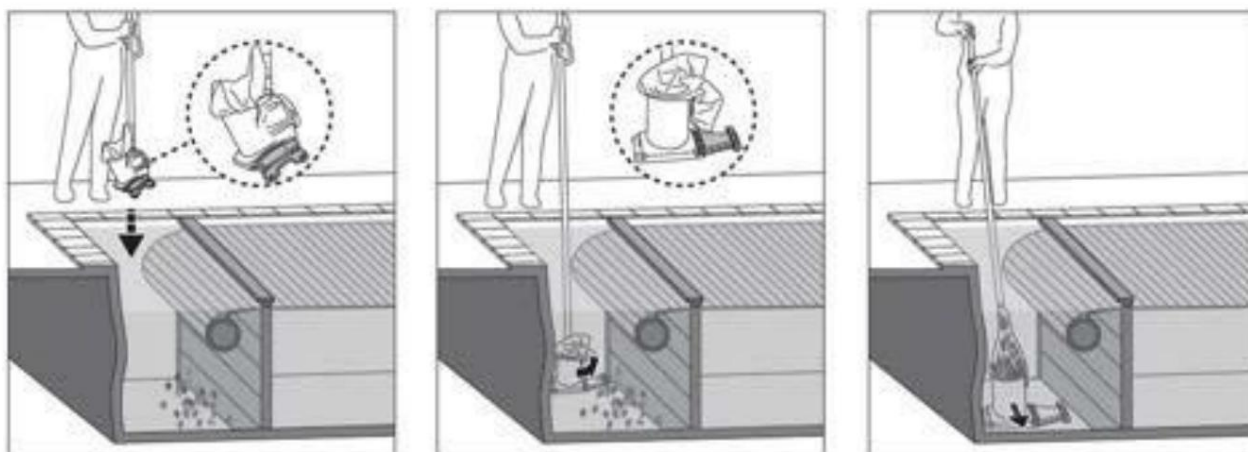
Once the pool cleaner is out of the water, the impeller will stop rotating after 2-3 seconds. The LED indicator will turn blue. When the battery charge level drops, the blue indicator will flash.

- 3) Rinse the pool vacuum with clean water after each use. DO NOT USE no aggressive cleaning agent.
- 4) Dry the charging port and pins thoroughly (TIPS: Use a cotton swab to dry them).

Vacuuming the recess for automatic slatted cover

WARNING! Before starting this operation, carefully read all safety warnings regarding this cleaning in the instructions for your automatic slatted cover.

- The minimum width required to insert the vacuum cleaner into the recess is 30 cm (12 inches)



- Remove the battens covering the recess and roll up the pool slatted cover according to instructions given in the pool cover manual.
- Before submerging in the pool, remove one side attachment from the vacuum cleaner.
- Attach the telescopic pole (not included) to the handle of the pool vacuum cleaner. (delivery) according to the instructions in this manual.
- Turn on the vacuum cleaner and orient it as shown in the picture before immersing.
- Once the cleaner is on the bottom of the pool, level it as shown in the picture above and Start vacuuming the cavity.

CLEANING THE FILTER BAG/FILTER CARTRIDGE

Note: Not all models may be equipped with a filter bag

WARNING! Before cleaning the filter bag/filter cartridge, make sure the pool cleaner is turned off.

Regular washing of the filter bag and filter insert helps maintain good suction performance and direct contact of the vacuum cleaner with the pool bottom.

Place the vacuum cleaner on a flat surface. Press the cord clip to release the bag from the vacuum cleaner body.

After each cleaning cycle, it is recommended to rinse the filter bag with a stream of water. Spray the water at an angle to remove dirt stuck between the folds of the filter element. Never use a pressure washer as this may damage the element. To remove stuck dirt and sludge from a clogged filter, wash the filter bag in a washing machine at 30°C (86°F). If the filter element is heavily soiled, soak it in water with detergent for 2-3 hours and then rinse it with a stream of water. If it is necessary to brush the filter element, use a soft brush and proceed gently and carefully to avoid damage.

MAINTENANCE AND STORAGE

NOTE:

1. After each use, clean and dry the areas around the charging port and water sensors to prevent corrosion stains (a byproduct of the natural chemical reaction between water and electricity). However, these stains can be removed by gently scrubbing with a cotton pad dampened with lemon juice or vinegar.
2. The battery will self-discharge during storage. Before storing, check that the battery charge level is between 30% and 50%.
3. When the vacuum cleaner is not in use, the battery must be recharged at least once every three months.
 - Disconnect the external power source from the electrical outlet, and then disconnect the charging cable from the charging port plugs.
 - Remove the accessories from the pool vacuum cleaner. If necessary, rinse the vacuum cleaner and accessories with clean water. DO NOT use any aggressive cleaning agents.
 - Dry the vacuum cleaner before storing it.
 - Use a damp cloth to clean the pool vacuum cleaner and accessories.
 - Store the vacuum cleaner and accessories in a well-ventilated area away from sunlight, heat, ignition sources, pool chemicals, and children. Storage temperature should be 10°C – 25°C (50°F – 77°F). NOTE: Higher temperatures may reduce battery life during storage.

NOTICE!

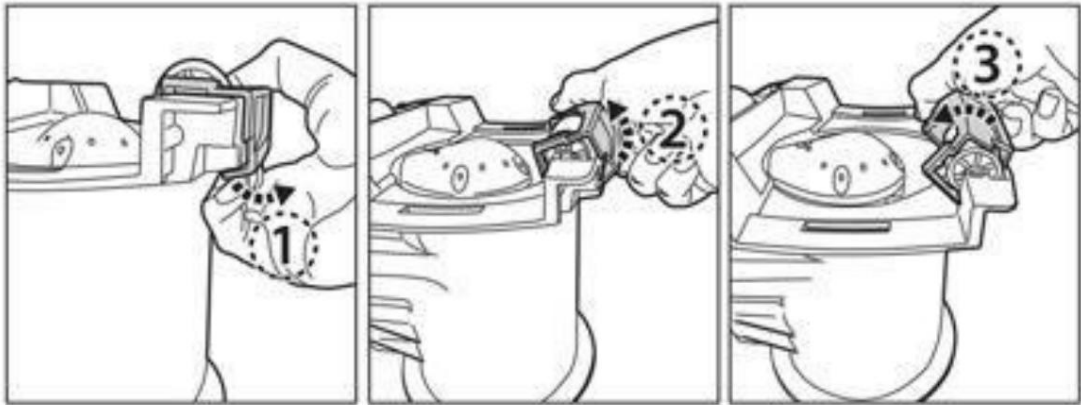
Under no circumstances should you attempt to disassemble the vacuum cleaner body or replace the impeller, electric motor, and battery yourself.

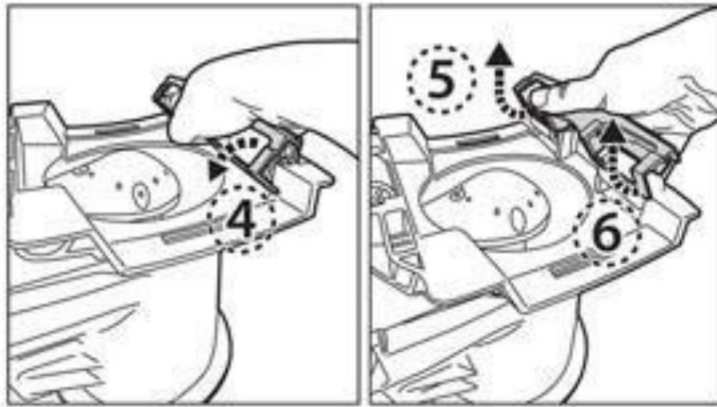
NOTICE!

- Excessive heat can damage the battery and shorten the life of the pool vacuum.
- Contact your dealer to request a battery replacement if you notice any of the following:
 - the following:
 - The battery cannot be fully recharged.
 - Battery life will be significantly reduced. Observe and record the battery life during the first few uses (when fully charged). Use these records to compare with battery life observed in the future.
- The battery must be removed before disposing of the vacuum cleaner.
- The battery must be disposed of safely in accordance with local regulations and regulations.

NOTE: Improper maintenance can shorten the battery life and affect its capacity.

Replacing the front wheels





Before removing the damaged front wheels, you must first dismantle the frame.

1. Pry open and lift the edge of the frame.

2/3/4. Turn the frame to the other side.

5. Grasp it by one side and lift it up.

6. Lift the other end and separate the entire frame to gain access to the damaged wheel.

BATTERY DISPOSAL (must be carried out by an authorized technician)

The battery in your pool vacuum is a maintenance-free Li-Ion battery that must be disposed of properly. It is required for recycling; please contact your local authorities for more information.

WARNING! Never attempt to disassemble the battery.

• Before handling the battery disconnected from the pool heater, vacuum cleaner, remove all jewelry such as rings, bracelets, chains and watches.

• The battery can cause a short circuit strong enough to cause the ring (or other object) melted, which could lead to serious burns.

• Wear eye protection, gloves, and protective clothing when removing the battery.

• Do not touch the cables at all or allow them to come into contact with any metal objects, which could lead to sparking or shorting the battery.

• Never smoke, avoid sparks and do not use open flames near the battery or pool vacuum cleaner.

• Do not expose the battery to fire or intense heat as this may cause an explosion.

NOTICE!

If the battery is leaking, avoid contact with the leaking liquid and place the damaged battery in a plastic bag.

- If leaking liquid comes into contact with skin or clothing, wash immediately with soap and plenty of water.

- If the leaking liquid gets into your eyes, do not rub them and immediately flush them with cool running water for 15 minutes. Seek medical attention as soon as possible.

Battery removal procedure (must be performed by an authorized technician)

Recommended tools (not included): Screwdriver.

WARNING! Unplug the pool cleaner from the electrical outlet before removing the battery.



1. Place the vacuum cleaner on a flat surface. Use a screwdriver to unscrew the screws on the back cover. Remove the battery from the compartment.



2. Disconnect the battery cable by pressing the connector clip and pulling it out.
NOTE: Immediately wrap the connector with insulating tape to prevent a short circuit due to contact between the two cable terminals.



TROUBLESHOOTING

Problem	Possible cause	Solution
The underwater vacuum cleaner will not start working (up to 5-10 seconds)	Contaminated water sensors	Stains in the area around the water sensors can be removed with a cotton swab moistened with lemon juice, juice or vinegar.
	Low battery	Charge the pool vacuum cleaner.
The vacuum cleaner does not pick up dirt/dirt they leak back into the pool	Low battery level	Charge the pool vacuum cleaner.
	Blocked impeller	Remove the vacuum cleaner from the water and turn it off by turning the switch counterclockwise. Visually check if the impeller is blocked by larger pieces of dirt. Remove the dirt. If necessary, ask your dealer for further instructions. WARNING! Make sure the pool cleaner is turned off before servicing the device.
	Broken impeller	Contact your dealer for a replacement.
	Filter bag is full/clogged	Clean the filter bag.
The wheel has come loose from the vacuum cleaner body.	Check for a broken wheel or wheel collar	Replace with a new wheel/wheel collar.
Charging time is longer than stated	Corroded charging pins	Stains can be removed with a cotton swab moistened with lemon juice or vinegar.
The vacuum cleaner cannot be charged.	Damaged battery	Contact your dealer to request a battery replacement. WARNING! DO NOT replace the battery yourself. It could This could lead to serious or fatal injury and loss of life. guarantees.
	The charging plug is not properly connected to the external power source or for pool vacuum cleaner	Read the operating instructions and connect the charging accessory correctly.
	Defective external power supply	Contact your dealer for a replacement. WARNING! Using an incorrect external power source will damage the pool cleaner/battery and void the warranty.
Environmental protection programs, European WEEE directive		
	Comply with European Union regulations and help protect the environment. Hand over your old electrical equipment to a designated collection point for the recycling of electrical and electronic equipment. Do not dispose of it as unsorted municipal waste. For devices containing removable batteries, remove the batteries before disposing of the product.	
	© 2022 Kokido Development Ltd. 22008016 All rights reserved. This document or any part thereof may not be reproduced or transmitted in any form or by any means, electronic, mechanical, photocopying, recording or otherwise, without the prior written permission of Kokido Development Ltd. (V2)	

If you need an electronic copy of this user manual, please contact our customer service by email: customerservice@kokido.com

SAVE THESE INSTRUCTIONS

LIMITED WARRANTY

The warranty applies only to the original owner and is non-transferable. Please contact your local dealer for warranty information. The warranty does not

cover: • Normal wear and tear, including parts that may wear out over time (e.g. brush, rake, filter, filter bag, wheels and their accessories, etc.). • Accidental damage. •

Damage resulting from

use contrary to the data on the product label or the instructions in the user manual or

other product documents. • Damage due to

insufficient maintenance. • Damage due to

external causes such as transportation, weather, power outages or power surges. • Defects caused by conditions other than those recommended (e.g. water temperature, storage temperature, cleaning instructions).

usage, charging environment, etc.) •

Defects caused by: ÿ

Negligence, misuse, neglect or carelessness in using the device.

ÿ Use of the device contrary to these instructions for use.

- Use of components not assembled or installed in accordance with these instructions for use.

ÿ Use of non-original parts and accessories.

ÿ Incorrect assembly or installation.

ÿ Repairs or modifications (if permitted) carried out by unauthorized persons.

We reserve the right to make partial or complete changes to this document without prior notice.
International patents pending.

- (GB)** We reserve the right to change all or part of the features of the articles or contents of this document, without prior notice.
International patents pending
- (FR)** Nous nous réservons le droit de modifier tout ou partie des caractéristiques des articles ou des contenus de ce document, sans notification préalable.
Brevets internationaux en attente
- (ES)** Nos reservamos el derecho de modificar la totalidad o parte de las características de los artículos o contenidos de este documento sin aviso previo.
Patentes Internacionales pendientes
- (NL)** Wij behouden ons het recht voor om zonder voorafgaande kennisgeving de artikelen of de inhoud van dit document te wijzigen.
In afwachting van internationale patenten
- (IT)** Ci riserviamo il diritto di modificare integralmente o parzialmente le caratteristiche degli articoli o del contenuto del presente documento senza preavviso.
Patenti internazionali in attesa
- (DE)** Wir behalten uns das Recht vor, Aspekte der Artikel bzw. den Inhalt dieses Dokuments jeweils ganz oder teilweise ohne vorherige Ankündigung zu ändern.
International zum Patent angemeldet



Points de collecte sur www.quefaireadesdechets.fr



Verifica le disposizioni del tuo Comune.

NB-W-V2-22008016

Manufacturer/Manufacturer/Manufacturer/Manufacturer/Manufacturer/Manufacturer:

Kokido Development Limited.

Unit 1319, Sunbeam Centre, 27 Shing Yip Street, Kwun Tong, Kowloon, HK